



STAINLESS STEEL CAST FITTINGS

150lb 304 & 316 Stainless Steel Cast Fittings Specifications

- ✘ *Manufactured in ISO9000:2000 Facility*
- ✘ *Items Conform to AISI 304 / 316*
- ✘ *Investment Cast*
- ✘ *SP114 Stainless Fittings Available Upon Request*



800-678-2544 ☎ • 800-678-0857 📠 • www.msi-products.com

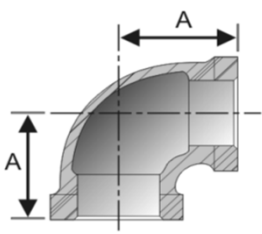
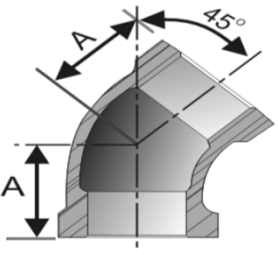
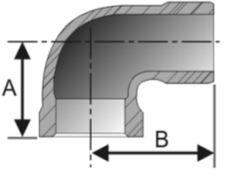
© Copyright 2012

❏ MSI 150# Stainless Steel Cast Threaded Pipe Fitting Specifications

800-678-2544 phone 800-678-0857 fax www.msi-products.com msisales@msi-products.com

THREADS: ANSI / ASME B1.20.1

MATERIAL: ASTM A351 (CF8/304 & CF8M/316)

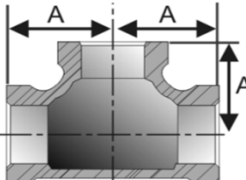
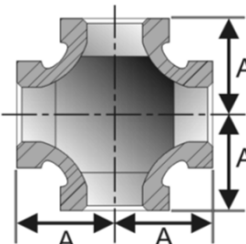
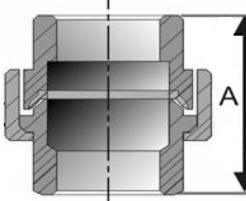
90° Elbows		Inner	Master	Weight	A	304ss		316ss		
Size	Carton	Case	Each lbs.	Inch	Item Code	Item Code				
	1/8"	120	480	0.0700	0.75	A3010002	A3210002			
	1/4"	80	320	0.1100	0.83	A3010004	A3210004			
	3/8"	50	200	0.1400	0.87	A3010006	A3210006			
	1/2"	30	120	0.2000	1.06	A3010008	A3210008			
	3/4"	18	72	0.3300	1.30	A3010012	A3210012			
	1"	8	32	0.5300	1.50	A3010016	A3210016			
	1-1/4"	5	20	0.8200	1.77	A3010020	A3210020			
	1-1/2"	4	16	1.0500	1.97	A3010024	A3210024			
	2"	2	8	1.5100	2.28	A3010032	A3210032			
	2-1/2"	1	6	3.0900	2.76	A3010040	A3210040			
	3"	1	4	4.0700	3.07	A3010048	A3210048			
	4"	1	2	7.0500	3.86	A3010064	A3210064			
45° Elbows		Inner	Master	Weight	A	304ss		316ss		
Size	Carton	Case	Each lbs.	Inch	Item Code	Item Code				
	1/8"	120	480	0.0700	0.71	A3010402	A3210402			
	1/4"	100	400	0.1100	0.71	A3010404	A3210404			
	3/8"	60	240	0.1300	0.79	A3010406	A3210406			
	1/2"	40	160	0.1900	0.87	A3010408	A3210408			
	3/4"	20	80	0.3100	0.98	A3010412	A3210412			
	1"	10	40	0.4400	1.10	A3010416	A3210416			
	1-1/4"	6	24	0.6700	1.30	A3010420	A3210420			
	1-1/2"	4	16	0.8400	1.42	A3010424	A3210424			
	2"	2	8	1.2900	1.69	A3010432	A3210432			
	2-1/2"	1	8	2.6500	1.97	A3010440	A3210440			
	3"	1	6	3.3600	2.17	A3010448	A3210448			
	4"	1	3	5.0900	4.54	A3010464	A3210464			
90° Street Elbows		Inner	Master	Weight	A	B	304ss		316ss	
Size	Carton	Case	Each lbs.	Inch	Inch	Item Code	Item Code			
	1/8"	120	480	0.0600	0.75	1.02	A3010602	A3210602		
	1/4"	100	400	0.1000	0.83	1.10	A3010604	A3210604		
	3/8"	60	240	0.1300	0.87	1.38	A3010606	A3210606		
	1/2"	35	140	0.2000	1.06	1.65	A3010608	A3210608		
	3/4"	18	72	0.3100	1.30	1.97	A3010612	A3210612		
	1"	10	40	0.4900	1.50	2.05	A3010616	A3210616		
	1-1/4"	5	20	0.7900	1.77	2.36	A3010620	A3210620		
	1-1/2"	4	16	1.0400	1.97	2.56	A3010624	A3210624		
	2"	2	8	1.5400	2.28	2.91	A3010632	A3210632		
	2-1/2"	1	6	3.0400	2.76	3.94	A3010640	A3210640		
	3"	1	4	4.4000	3.07	4.57	A3010648	A3210648		
	4"	1	2	7.3300	3.86	5.79	A3010664	A3210664		

MSI 150lb Stainless Cast Fittings Conform to AISI 304/316 ; Threads conform to ASME B1.20.1; SSP114 Fittings also available

MSI 150# Stainless Steel Cast Threaded Pipe Fitting Specifications

800-678-2544 phone 800-678-0857 fax www.msi-products.com msisales@msi-products.com

THREADS: ANSI / ASME B1.20.1 MATERIAL: ASTM A351 (CF8/304 & CF8M/316)

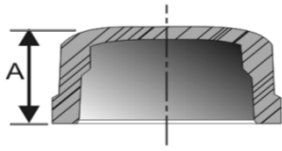
Tees		Inner Carton	Master Case	Weight Each lbs.	A Inch	304ss Item Code	316ss Item Code
	1/8"	75	300	0.1100	0.75	A3020002	A3220002
	1/4"	60	240	0.1700	0.83	A3020004	A3220004
	3/8"	40	160	0.2000	0.87	A3020006	A3220006
	1/2"	20	80	0.2900	1.06	A3020008	A3220008
	3/4"	12	48	0.4600	1.30	A3020012	A3220012
	1"	8	32	0.7200	1.50	A3020016	A3220016
	1-1/4"		26	1.1200	1.77	A3020020	A3220020
	1-1/2"		18	1.3600	1.97	A3020024	A3220024
	2"		8	1.9700	2.25	A3020032	A3220032
	2-1/2"		5	4.4800	2.76	A3020040	A3220040
	3"		4	5.2700	3.07	A3020048	A3220048
	4"		2	8.7400	3.86	A3020064	A3220064
Crosses		Inner Carton	Master Case	Weight Each lbs.	A Inch	304ss Item Code	316ss Item Code
	1/8"	50	200	0.1300	0.75	A3030202	A3230202
	1/4"	50	200	0.2000	0.83	A3030204	A3230204
	3/8"	30	120	0.2200	0.87	A3030206	A3230206
	1/2"	15	60	0.3300	1.06	A3030208	A3230208
	3/4"	8	32	0.5400	1.30	A3030212	A3230212
	1"	5	20	0.8600	1.50	A3030216	A3230216
	1-1/4"	3	12	1.3000	1.77	A3030220	A3230220
	1-1/2"	2	8	1.6600	1.97	A3030224	A3230224
	2"		9	2.4100	2.28	A3030232	A3230232
	2-1/2"		4	4.8000	2.76	A3030240	A3230240
	3"		2	5.9100	3.07	A3030248	A3230248
	4"		1	10.2300	3.86	A3030264	A3230264
Unions		Inner Carton	Master Case	Weight Each lbs.	A Inch	304ss Item Code	316ss Item Code
	1/8"	50	200	0.1300	1.14	A3040802	A3240802
	1/4"	45	180	0.2100	1.46	A3040804	A3240804
	3/8"	35	140	0.2800	1.50	A3040806	A3240806
	1/2"	25	100	0.3600	1.65	A3040808	A3240808
	3/4"	12	48	0.5400	1.81	A3040812	A3240812
	1"	10	40	0.9600	1.97	A3040816	A3240816
	1-1/4"	3	12	1.2600	2.32	A3040820	A3240820
	1-1/2"	2	8	1.7900	2.52	A3040824	A3240824
	2"	2	8	2.5100	2.72	A3040832	A3240832
	2-1/2"		8	4.6600	3.15	A3040840	A3240840
	3"		6	4.9600	3.46	A3040848	A3240848
	4"		2	8.4200	4.25	A3040864	A3240864

MSI 150# Stainless Steel Cast Threaded Pipe Fitting Specifications

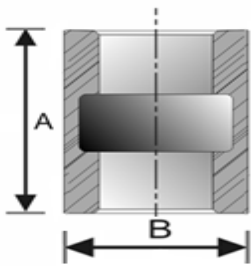
800-678-2544 phone 800-678-0857 fax www.msi-products.com msisales@msi-products.com

THREADS: ANSI / ASME B1.20.1 MATERIAL: ASTM A351 (CF8/304 & CF8M/316)

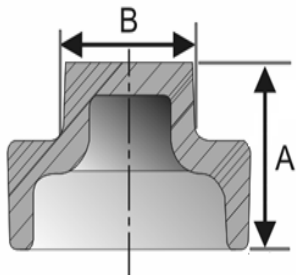
Caps		Inner	Master	Weight	A	304ss		316ss	
Size	Carton	Case	Each lbs.	Inch	Inch	Item Code	Item Code	Item Code	Item Code
1/8"	300	1200	0.0300	0.59		A3040502		A3240502	
1/4"	200	800	0.0500	0.67		A3040504		A3240504	
3/8"	120	480	0.0600	0.67		A3040506		A3240506	
1/2"	90	360	0.1000	0.79		A3040508		A3240508	
3/4"	50	200	0.1600	0.94		A3040512		A3240512	
1"	25	100	0.3100	1.14		A3040516		A3240516	
1-1/4"	16	64	0.4300	1.26		A3040520		A3240520	
1-1/2"	14	56	0.5500	1.34		A3040524		A3240524	
2"	8	32	0.8800	1.50		A3040532		A3240532	
2-1/2"		24	1.6100	1.69		A3040540		A3240540	
3"		12	2.2000	1.89		A3040548		A3240548	
4"		10	3.1800	2.09		A3040564		A3240564	



Full Couplings		Inner	Master	Weight	A	B	304ss		316ss	
Size	Carton	Case	Each lbs.	Inch	Inch	Inch	Item Code	Item Code	Item Code	Item Code
1/8"	200	800	0.0400	0.94	0.59		A3030402		A3230402	
1/4"	120	480	0.0700	1.10	0.73		A3030404		A3230404	
3/8"	100	400	0.1000	1.14	0.87		A3030406		A3230406	
1/2"	60	240	0.1400	1.34	1.04		A3030408		A3230408	
3/4"	36	144	0.2000	1.34	1.26		A3030412		A3230412	
1"	18	72	0.3300	1.69	1.54		A3030416		A3230416	
1-1/4"	12	48	0.5300	1.89	1.93		A3030420		A3230420	
1-1/2"	12	48	0.6000	1.89	2.17		A3030424		A3230424	
2"	4	16	0.9800	2.20	2.68		A3030432		A3230432	
2-1/2"		10	2.1300	2.56	3.39		A3030440		A3230440	
3"		6	2.6000	2.80	3.94		A3030448		A3230448	
4"		4	4.0900	3.27	4.96		A3030464		A3230464	



Square Head Plugs		Inner	Master	Weight	A	B	304ss		316ss	
Size	Carton	Case	Each lbs.	Inch	Inch	Inch	Item Code	Item Code	Item Code	Item Code
1/8"	500	2000	0.0200	0.71	0.28		A3050102		A3250102	
1/4"	400	1600	0.0300	0.79	0.35		A3050104		A3250104	
3/8"	200	800	0.0600	0.87	0.43		A3050106		A3250106	
1/2"	120	480	0.0800	1.02	0.51		A3050008		A3250008	
3/4"	80	320	0.1200	1.14	0.63		A3050012		A3250012	
1"	40	160	0.1900	1.26	0.79		A3050016		A3250016	
1-1/4"	24	96	0.3100	1.38	0.94		A3050020		A3250020	
1-1/2"	20	80	0.4100	1.46	1.02		A3050024		A3250024	
2"	10	40	0.6600	1.61	1.26		A3050032		A3250032	
2-1/2"	6	24	1.0900	1.89	1.65		A3050040		A3250040	
3"		12	1.7300	2.09	1.81		A3050048		A3250048	
4"		12	3.3700	2.44	2.28		A3050064		A3250064	

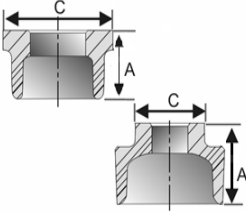




MSI 150# Stainless Steel Cast Threaded Pipe Fitting Specifications

800-678-2544 phone 800-678-0857 fax www.msi-products.com msisales@msi-products.com

THREADS: ANSI / ASME B1.20.1 MATERIAL: ASTM A351 (CF8/304 & CF8M/316)

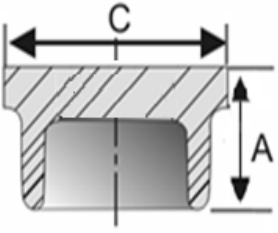
Hex Bushings	Size	Inner Carton	Master Case	Weight Each lbs.	A Inch	C Inch	304ss Item Code	316ss Item Code
	1/4" x 1/8"	300	1200	0.0264	0.67	0.63	A304000402	A324000402
	3/8" x 1/8"	200	800	0.0485	0.71	0.79	A304000602	A324000602
	3/8" x 1/4"	200	800	0.0397	0.71	0.79	A304000604	A324000604
	1/2" x 1/8"	120	480	0.0815	0.83	0.94	A304000802	A324000802
	1/2" x 1/4"	120	480	0.0771	0.83	0.94	A304000804	A324000804
	1/2" x 3/8"	120	480	0.0617	0.83	0.94	A304000806	A324000806
	3/4" x 1/8"	70	280	0.1322	0.94	1.18	A304001202	A324001202
	3/4" x 1/4"	70	280	0.1411	0.94	1.18	A304001204	A324001204
	3/4" x 3/8"	70	280	0.1344	0.94	1.18	A304001206	A324001206
	3/4" x 1/2"	70	280	0.1102	0.94	1.18	A304001208	A324001208
	1" x 1/4"	40	160	0.2380	1.06	1.42	A304001604	A324001604
	1" x 3/8"	40	160	0.2402	1.06	1.42	A304001606	A324001606
	1" x 1/2"	40	160	0.2160	1.06	1.42	A304001608	A324001608
	1" x 3/4"	40	160	0.1785	1.06	1.42	A304001612	A324001612
	1-1/4" x 1/4"	18	72	0.3681	1.18	1.77	A304002004	A324002004
	1-1/4" x 3/8"	18	72	0.3681	1.18	1.77	A304002006	A324002006
	1-1/4" x 1/2"	18	72	0.4055	1.18	1.77	A304002008	A324002008
	1-1/4" x 3/4"	18	72	0.4055	1.18	1.77	A304002012	A324002012
	1-1/4" x 1"	18	72	0.2909	1.18	1.77	A304002016	A324002016
	1-1/2" x 1/4"	16	64	0.4959	1.26	2.05	A304002404	A324002404
	1-1/2" x 3/8"	16	64	0.4959	1.26	2.05	A304002406	A324002406
	1-1/2" x 1/2"	16	64	0.4959	1.26	2.05	A304002408	A324002408
	1-1/2" x 3/4"	16	64	0.5378	1.26	2.05	A304002412	A324002412
	1-1/2" x 1"	16	64	0.4893	1.26	2.05	A304002416	A324002416
	1-1/2" x 1-1/4"	16	64	2.0500	1.26	2.05	A304002420	A324002420
	2" x 1/2"	9	36	2.5200	1.42	2.52	A304003208	A324003208
	2" x 3/4"	9	36	2.5200	1.42	2.52	A304003212	A324003212
	2" x 1"	9	36	2.5200	1.42	2.52	A304003216	A324003216
	2" x 1-1/4"	9	36	2.5200	1.42	2.52	A304003220	A324003220
	2" x 1-1/2"	9	36	2.5200	1.42	2.52	A304003224	A324003224
	2-1/2" x 1/2"	4	16	3.1500	1.65	3.15	A304004008	A324004008
	2-1/2" x 3/4"	4	16	3.1500	1.65	3.15	A304004012	A324004012
2-1/2" x 1"	4	16	3.1500	1.65	3.15	A304004016	A324004016	
2-1/2" x 1-1/4"	4	16	3.1500	1.65	3.15	A304004020	A324004020	
2-1/2" x 1-1/2"	4	16	3.1500	1.65	3.15	A304004024	A324004024	
2-1/2" x 2"	4	16	3.1500	1.65	3.15	A304004032	A324004032	
3" x 1"	3	12	3.7400	1.85	3.74	A304004816	A324004816	
3" x 1-1/4"	3	12	3.7400	1.85	3.74	A304004820	A324004820	
3" x 1-1/2"	3	12	3.7400	1.85	3.74	A304004824	A324004824	
3" x 2"	3	12	3.7400	1.85	3.74	A304004832	A324004832	
3" x 2-1/2"	3	12	3.7400	1.85	3.74	A304004840	A324004840	
4" x 1"		8	4.7200	2.13	4.72	A304006416	A324006416	
4" x 1-1/4"		8	4.7200	2.13	4.72	A304006420	A324006420	
4" x 1-1/2"		8	4.7200	2.13	4.72	A304006424	A324006424	
4" x 2"		8	4.7200	2.13	4.72	A304006432	A324006432	
4" x 2-1/2"		8	4.7200	2.13	4.72	A304006440	A324006440	
4" x 3"		8	4.7200	2.13	4.72	A304006448	A324006448	

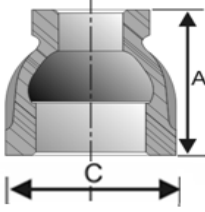
MSI 150lb Stainless Cast Fittings Conform to AISI 304/316 ; Threads conform to ASME B1.20.1; SSP114 Fittings also available

❏ MSI 150# Stainless Steel Cast Threaded Pipe Fitting Specifications

800-678-2544 phone 800-678-0857 fax www.msi-products.com msisales@msi-products.com

THREADS: ANSI / ASME B1.20.1 MATERIAL: ASTM A351 (CF8/304 & CF8M/316)

Hex Plugs	Size	Inner Carton	Master Case	Weight Each lbs.	A Inch	C Inch	304ss	316ss
							Item Code	Item Code
	1/8"	400	1600	0.0200	0.63	0.47	A3050302	A3250302
	1/4"	300	1200	0.0400	0.67	0.63	A3050304	A3250304
	3/8"	200	800	0.0800	0.71	0.79	A3050306	A3250306
	1/2"	120	480	0.1100	0.91	0.94	A3050208	A3250208
	3/4"	60	240	0.1700	1.02	1.18	A3050212	A3250212
	1"	35	140	0.2600	1.14	1.42	A3050216	A3250216
	1-1/4"	18	72	0.4100	1.26	1.77	A3050220	A3250220
	1-1/2"	15	60	0.5700	1.38	2.05	A3050224	A3250224
	2"	6	24	0.9500	1.57	2.52	A3050232	A3250232
	2-1/2"	4	16	1.3200	1.77	3.15	A3050240	A3250240
	3"		12	2.2900	1.97	3.74	A3050248	A3250248
	4"		10	3.6000	2.24	4.72	A3050264	A3250264

Reducing Couplings	Size	Inner Carton	Master Case	Weight Each lbs.	A Inch	C Inch	304ss	316ss
							Item Code	Item Code
	1/4" x 1/8"	120	480	0.0700	1.02	0.83	A303080402	A323080402
	3/8" x 1/8"	100	400	0.0800	1.10	0.94	A303080602	A323080602
	3/8" x 1/4"	100	400	0.0900	1.10	0.94	A303080604	A323080604
	1/2" x 1/8"	60	240	0.1200	1.34	1.14	A303080802	A323080802
	1/2" x 1/4"	60	240	0.1300	1.34	1.14	A303080804	A323080804
	1/2" x 3/8"	60	240	0.1400	1.34	1.14	A303080806	A323080806
	3/4" x 1/4"	36	144	0.1800	1.50	1.38	A303081204	A323081204
	3/4" x 3/8"	36	144	0.1900	1.50	1.38	A303081206	A323081206
	3/4" x 1/2"	36	144	0.2100	1.50	1.38	A303081208	A323081208
	1" x 1/4"	20	80	0.3000	1.65	1.69	A303081604	A323081604
	1" x 3/8"	20	80	0.2900	1.65	1.69	A303081606	A323081606
	1" x 1/2"	20	80	0.3200	1.65	1.69	A303081608	A323081608
	1" x 3/4"	20	80	0.3300	1.65	1.69	A303081612	A323081612
	1-1/4" x 1/2"	16	64	0.4500	1.89	2.05	A303082008	A323082008
	1-1/4" x 3/4"	16	64	0.4600	1.89	2.05	A303082012	A323082012
	1-1/4" x 1"	16	64	0.5300	1.89	2.05	A303082016	A323082016
	1-1/2" x 3/8"	12	48	0.5100	2.05	2.28	A303082406	A323082406
	1-1/2" x 1/2"	12	48	0.5400	2.05	2.28	A303082408	A323082408
	1-1/2" x 3/4"	12	48	0.5600	2.05	2.28	A303082412	A323082412
	1-1/2" x 1"	12	48	0.6200	2.05	2.28	A303082416	A323082416
	1-1/2" x 1-1/4"	12	48	0.6500	2.05	2.28	A303082420	A323082420
	2" x 3/8"	4	16	0.8600	2.20	2.80	A303083206	A323083206
	2" x 1/2"	4	16	0.7900	2.20	2.80	A303083208	A323083208
	2" x 3/4"	4	16	0.8200	2.20	2.80	A303083212	A323083212
	2" x 1"	4	16	0.9100	2.20	2.80	A303083216	A323083216
	2" x 1-1/4"	4	16	0.9300	2.20	2.80	A303083220	A323083220
	2" x 1-1/2"	4	16	0.9300	2.20	2.80	A303083224	A323083224

MSI 150lb Stainless Cast Fittings Conform to AISI 304/316 ; Threads conform to ASME B1.20.1; SSP114 Fittings also available

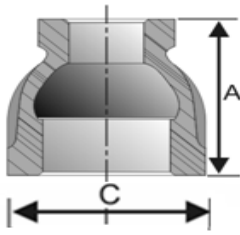


MSI 150# Stainless Steel Cast Threaded Pipe Fitting Specifications

800-678-2544 phone 800-678-0857 fax www.msi-products.com msisales@msi-products.com

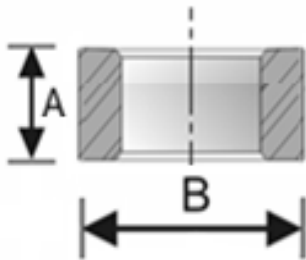
THREADS: ANSI / ASME B1.20.1 MATERIAL: ASTM A351 (CF8/304 & CF8M/316)

Reducing Couplings



Size	Inner Carton	Master Case	Weight Each lbs.	A Inch	C Inch	304ss Item Code	316ss Item Code
2-1/2" x 1"		18	1.6900	2.48	3.46	A303084016	A323084016
2-1/2" x 1 1/4"		18	1.6900	2.48	3.46	A303084020	A323084020
2-1/2" x 1 1/2"		18	1.6400	2.48	3.46	A303084024	A323084024
2-1/2" x 2"		18	1.6800	2.48	3.46	A303084032	A323084032
3" x 3/4"		12	2.0300	2.76	4.02	A303084812	A323084812
3" x 1"		12	2.0800	2.76	4.02	A303084816	A323084816
3" x 1 1/4"		12	2.0200	2.76	4.02	A303084820	A323084820
3" x 1 1/2"		12	2.0200	2.76	4.02	A303084824	A323084824
3" x 2"		12	2.0900	2.76	4.02	A303084832	A323084832
3" x 2-1/2"		8	2.3000	2.76	4.02	A303084840	A323084840
4" x 1-1/4"		4	3.7400	3.15	5.04	A303086420	A323086420
4" x 1-1/2"		4	3.6500	3.15	5.04	A303086424	A323086424
4" x 2"		4	3.4300	3.15	5.04	A303086432	A323086432
4" x 2-1/2"		4	3.7400	3.15	5.04	A303086440	A323086440
4" x 3"		4	3.6500	3.15	5.04	A303086448	A323086448

Half Couplings



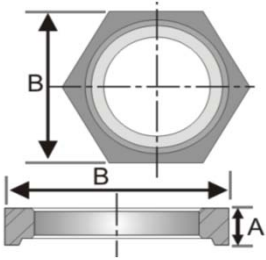
Size	Inner Carton	Master Case	Weight Each lbs.	A Inch	B Inch	304ss Item Code	316ss Item Code
1/8"	300	1200	0.0200	0.50	0.62	A3030602	A3230602
1/4"	250	1000	0.0500	0.57	0.79	A3030604	A3230604
3/8"	200	800	0.0690	0.59	0.91	A3030606	A3230606
1/2"	120	480	0.1000	0.70	1.09	A3030608	A3230608
3/4"	70	280	0.1100	0.84	1.35	A3030612	A3230612
1"	40	160	0.1500	0.88	1.66	A3030616	A3230616
1-1/4"	24	96	0.2200	1.01	1.91	A3030620	A3230620
1-1/2"	20	80	0.4500	1.13	2.22	A3030624	A3230624
2"	8	32	0.4400	1.30	2.78	A3030632	A3230632
2-1/2"		23	1.0300	1.49	3.39	A3030640	A3230640
3"		14	1.2100	1.65	4.13	A3030648	A3230648
4"		12	1.9800	1.91	5.20	A3030664	A3230664

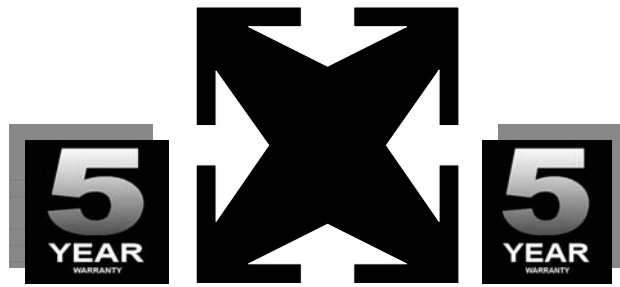
MSI 150lb Stainless Cast Fittings Conform to AISI 304/316 ; Threads conform to ASME B1.20.1; SSP114 Fittings also available

MSI 150# Stainless Steel Cast Threaded Pipe Fitting Specifications

800-678-2544 phone 800-678-0857 fax www.msi-products.com msisales@msi-products.com

THREADS: ANSI / ASME B1.20.1 MATERIAL: ASTM A351 (CF8/304 &CF8M/316)

Locknuts	Size	Inner	Master	Weight	A	B	304ss	316ss
		Carton	Case	Each lbs.	Inch	Inch	Item Code	Item Code
	1/8"	300	1200	0.0100	0.24	0.55	A3040602	A3240602
	1/4"	200	800	0.0300	0.28	0.87	A3040604	A3240604
	3/8"	125	500	0.0600	0.31	1.06	A3040606	A3240606
	1/2"	100	400	0.0800	0.35	1.26	A3040608	A3240608
	3/4"	90	360	0.0800	0.35	1.42	A3040612	A3240612
	1"	50	200	0.1600	0.39	1.81	A3040616	A3240616
	1 1/4"	40	160	0.2900	0.43	2.17	A3040620	A3240620
	1 1/2"	25	100	0.2600	0.47	2.36	A3040624	A3240624
	2"		75	0.5800	0.51	2.95	A3040632	A3240632
	2 1/2"		50	1.0000	0.63	3.74	A3040640	A3240640
	3"		35	1.4400	0.75	4.13	A3040648	A3240648
	4"		25	1.4600	0.79	5.12	A3040664	A3240664



MSI 5 YEAR LIMITED WARRANTY

MSI warrants to its initial purchaser only, that its products which are delivered to the initial purchaser will be of the kind described in the order or price list and will be free of defects in workmanship or material for a period of (5) five years from the date of delivery to MSI's initial purchaser.

Should any failure to conform to this warranty appear within (5) five years after the date of the initial delivery to MSI's initial purchaser, MSI will, upon written notification thereof and substantiation that the goods have been stored, installed, maintained and operated in accordance with recognized engineering and piping practices and industry standards, correct such defects by suitable replacement of product at our expense upon return of the defective product to MSI.

This warranty applies only during normal use that meets the above referenced conditions of installation and operation and is absolutely void if the product has been damaged after purchase or if it has been misused, repaired, altered or modified in any manner whatsoever. MSI shall not warranty any of its products if any portion of the product including without limitation, any component, gasket, housing or bolt has been modified, altered, remanufactured or replaced in any manner by any customer, user of the product or third party.

Correction of non-conformities, in the manner and for the period of time provided above, shall constitute fulfillment of all liabilities of MSI to MSI's initial purchaser, with respect to the goods, whether based on contract, negligence, strict tort or otherwise. It is the intention of MSI that no warranty of any kind, whether expressed or implied shall pass through MSI's initial purchaser to any other person or corporation.

No returns will be permitted unless prior written permission of MSI is first obtained. Buyers shall be responsible for all costs of transportation as well as any applicable restocking fees.

This warranty is exclusively for the benefit of MSI's initial purchaser of the product from MSI and to the extent prohibited by applicable law, the foregoing warranty is in lieu of all other warranties, express or implied, including but not limited to warranties of fitness or merchantability.

LIMITATIONS OF LIABILITY

MSI shall not under any circumstances be liable for special or consequential damages such as, but not limited to, damage to loss of other property or equipment, loss of profits or revenue, cost of capital, cost of purchased or replacement goods, claims of customers of our initial purchaser, any labor cost or replacement of the product or damage caused by the product.

The remedies of MSI's initial purchaser and all others, set forth herein are exclusive and the liability of MSI with respect to same shall not, except as expressly provided herein, exceed the price of the MSI products on which such liability is based.